



Dec 19/Jan 20



LV JUICE

WE'RE ON THE LINE

Emergencies don't work nine to five and neither do we. Twenty-four hours a day, seven days a week, TransNet is on the job. There's no answering machine in the office – every call is answered by our trained in-house customer service team who are available to answer all your questions and get the products you need delivered to you when you need them.

In addition, you have access to ongoing technical support from our industry experienced engineers & product managers, to ensure that no matter how difficult the job is you'll have the knowledge to do it right.



HOW WE CAN HELP

- 24/7 service – especially important during severe weather events
- Full nationwide coverage in freighting services
- Excellent stock holding & fast delivery
- Standard same day order confirmations
- 3 stocking distribution facilities in Australasia
- Over 60 specialist staff
- 100% New Zealand owned

WHENEVER YOU'RE ON THE LINE

WE'RE ALSO ONLINE! CHECK OUT WWW.TRANSNET.CO.NZ

WHENEVER, WHEREVER, WE'VE GOT IT!



This Month

GET SUMMER READY WITH TRANSNET PAGE 3

APPRENTICE TOOLKIT PROMO DEAL PAGE 4

RAYTEC ZONE 1 & 2 HAZARDOUS AREA LINEAR LIGHTS PAGE 6

FREE TRANSNET GYM TOWEL

WHILE STOCKS LAST

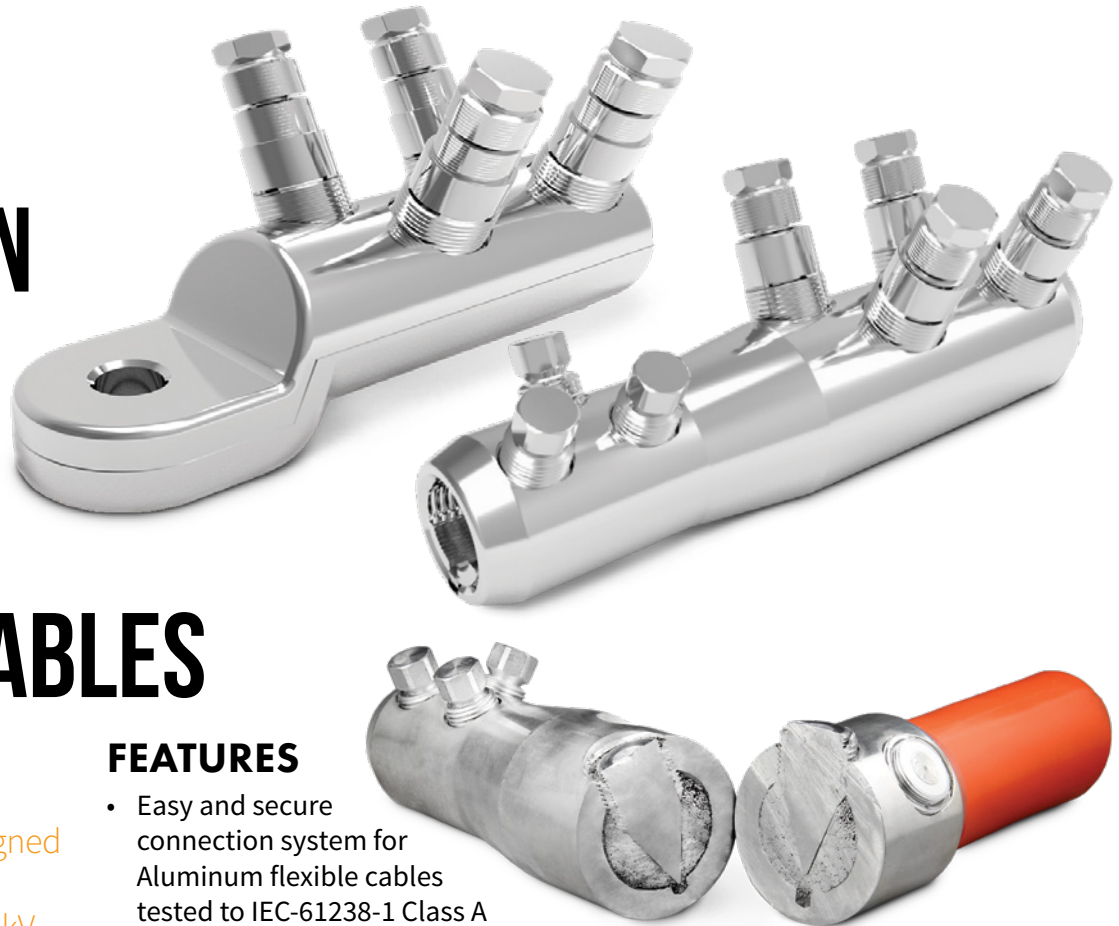


When you spend over \$400 (excl GST) on one invoice this month

www.transnet.co.nz



EASY & SECURE CONNECTION SYSTEM FOR ALUMINIUM FLEXIBLE CABLES



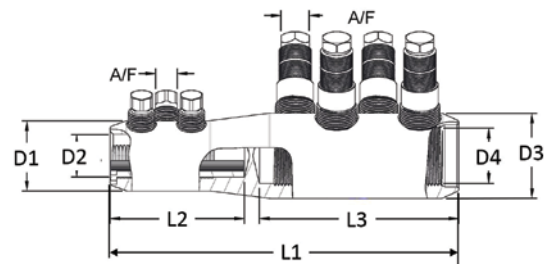
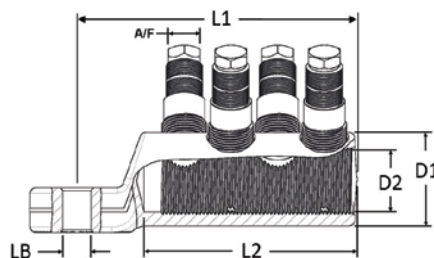
TE Connectivity's BSMB and BLMT-FLEX mechanical connectors and lugs are designed for use in low and medium voltage applications up to 42 kV, and consist of high tensile aluminium tin-plated body and shear-head bolts. Lugs are suitable for outdoor and indoor applications and are available with different palm hole sizes.

FEATURES

- Easy and secure connection system for Aluminum flexible cables tested to IEC-61238-1 Class A
- New patented two step shear off bolts provide pre-determined torque & ensure reliable and secure contact without damaging fine Aluminum strands
- Easier and faster installation without application tooling and reduced number of bolts
- To be available for cable cross sections 70 mm² through 500 mm²
- Dual range connectors available for connecting Cu – Al and Al – Al combinations for class 5 & class 2 conductors

Cat No.	Cross Sectional Range (mm ²)		Dimensions (mm)							Contact Bolts Quantity		Head Size AF (mm)	
	Class 2 Conductors	Class 5 Flexible Conductors	L1	L2	L3	D1	D2	D3	D4	Side 1	Side 2	Side 1	Side 2
BSMB-150/400-400-FLEX	150/400	300/400	210	80	120	42	25.5	51	33	3	4	13	17

Cat No.	Cross Sectional Range (mm ²)	Palm Hole Diameter (mm) LB	Dimensions (mm)				Contact Bolts Quantity	Head Size AF (mm)
	Class 5 Conductors		L1	L2	D1	D2		
BLMT-400 FLEX-15	300/400	15	150	115	51	33	4	17
BLMT-400 FLEX-17	300/400	17	150	115	51	33	4	17
BLMT-400 FLEX-21	300/400	21	150	115	51	33	4	17





BOAT TRAILERS • FISHING REELS • SUN PROTECTION

REELX ULTIMATE FISHING REEL LUBRICANT

FEATURES

- Displaces moisture permanently
- No wax, tar, silicone etc.
- Outperforms all other reel lubricants (lubrication factor of 0,31)
- Can be applied over wet and already corroded metal surfaces and also electronics
- Improves performance, bearing life and reliability
- Non flammable
- Stops and prevents rust and corrosion the moment it is applied



Cat No.	Description
REELX	CORROSION X REEL LUBRICANT 1OZ

DURASEAL HEATSHRINKABLE CRIMP CONNECTORS



Raychem
from TE Connectivity

FEATURES

- Crimp link inside sealant-lined heatshrink sleeve
- Completely environmentally sealed - protects from water, condensation, salt, and corrosion
- Provides strain relief
- Fully insulates connection

APPLICATIONS

- Automotive wiring, repair, maintenance & accessory installations
- Marine electronics
- Fleet maintenance
- Appliances



SUNGARD SPF40 SUNSCREEN WITH NATURAL INSECT REPELLENT

FEATURES

- SPF40 UVA/UVB advanced broad-spectrum protection
- Protects against mosquitoes, sandflies etc.
- Meets AS/NZS Standard 2604:2012
- Dermatologically tested, free from Parabens and MIT
- 2 hours water resistance
- Safe non-slip dry lotion, low irritant, sweat-resistant formulation
- Super-fast absorbing lotion, feels clean and weightless



Cat No.	Type	Size
SG40IR-125	FLIP TOP SQUEEZE TUBE	125ml
SG40IR-500	PUMP BOTTLE	500ml

UTILUX TRAILER PLUGS



UV stabilised, made from impact resistant thermoplastic with a spring loaded lid. Nickel plated contacts provide excellent electrical performance.



Cat No.	Description	Type
H40904/1	7 PIN TRAILER PLUG (MALE)	LOOSE
H40904/D1		BLISTER
H40905/1	7 PIN TRAILER PLUG BASE (FEMALE)	LOOSE
H40905/D1		BLISTER
H40904-HOLDER	7 PIN TRAILER PLUG HOLDER	LOOSE



haupa®

KIT CONTENTS

1. Electrician's tool pouch with nylon belt
2. TNLVD-15 non-contact voltage detector tester
3. 5m measuring tape
4. Cable stripping knife
5. VDE screwdriver 6pc 1000V set - Pozi x2, Flat x 2, Square x 2
6. 1000V VDE wire stripper pliers 160mm, 0.2-6.0mm
7. 1000V VDE combo pliers 200mm
8. 1000V VDE heavy duty diagonal cutters 200mm
9. 1000V VDE pantograph long nose pliers 200mm
10. Gib wall board saw with holster





Insulated tools are a matter of trust

Professionals trust their tools. This trust is vital when working on electrical installations. In this case, the electrician holding the pliers is also holding their life in their hands. Our insulated tools therefore not only meet statutory requirements, but also offer the greatest possible safety, reliability and performance.

Every insulated tool undergoes, one by one, a dielectric strength at 10,000V AC before we sell it. This means that work in the area up to 1,000V AC has a safety buffer of ten times the permitted maximum limit. Other procedures check the reliability of the insulation towards heat, cold, tensile and impact force.



Testing dielectric strength, subjecting each pair of pliers to a load of 10,000V AC



KP9505155 Electricians' Shears

FEATURES

- Universal shears for electricians
- Handles with multi-component grips, fibreglass-reinforced
- Precisely ground blades with fine serration for a clean, non-slip cut
- Cutting edge with integrated cable cutter
- Plastic belt pouch
- Cutting edges made from stainless steel, hardness of cutting edges 56 HRC



KP9505155

KP9852 Cable Knife

FEATURES

- 1000V VDE dual component handles
- Ergonomically designed handle with comfortable slip guard
- Thumb recess and "finger hook" ensure a good transmission of force when the blade is pulled
- Transparent protective cap
- Special tool steel, oil-hardened blade
- Solid, fixed straight blade



KP9852

KP9854 Cable Knife

FEATURES

- 1000V VDE dual component handles
- Ergonomically designed handle with comfortable slip guard
- Thumb recess and "finger hook" ensure a good transmission of force when the blade is pulled
- Transparent protective cap
- Special tool steel, oil-hardened blade
- Solid, fixed straight blade
- Plastic coated blade back to avoid short circuits



KP9854

KP9855 Dismantling Knife

FEATURES

- 1000V VDE dual component handles
- Ergonomically designed handle with comfortable slip guard
- Thumb recess and "finger hook" ensure a good transmission of force when the blade is pulled
- Transparent protective cap
- Surgical steel, stainless, vacuum-hardened
- Sickle shaped hook blade with guide shoe at the blade point
- 23.5mm radius



KP9855

KP162050 Electricians' Folding Knife

FEATURES

- Top quality, extremely sharp Stainless Steel blade
- Ergonomic handle design for a comfortable grip and easy guidance
- Handle made from robust, shock-resistant plastic
- Good power transmission during use
- Stable blade
- Tether attachment at the handle end allows a fastener to be attached

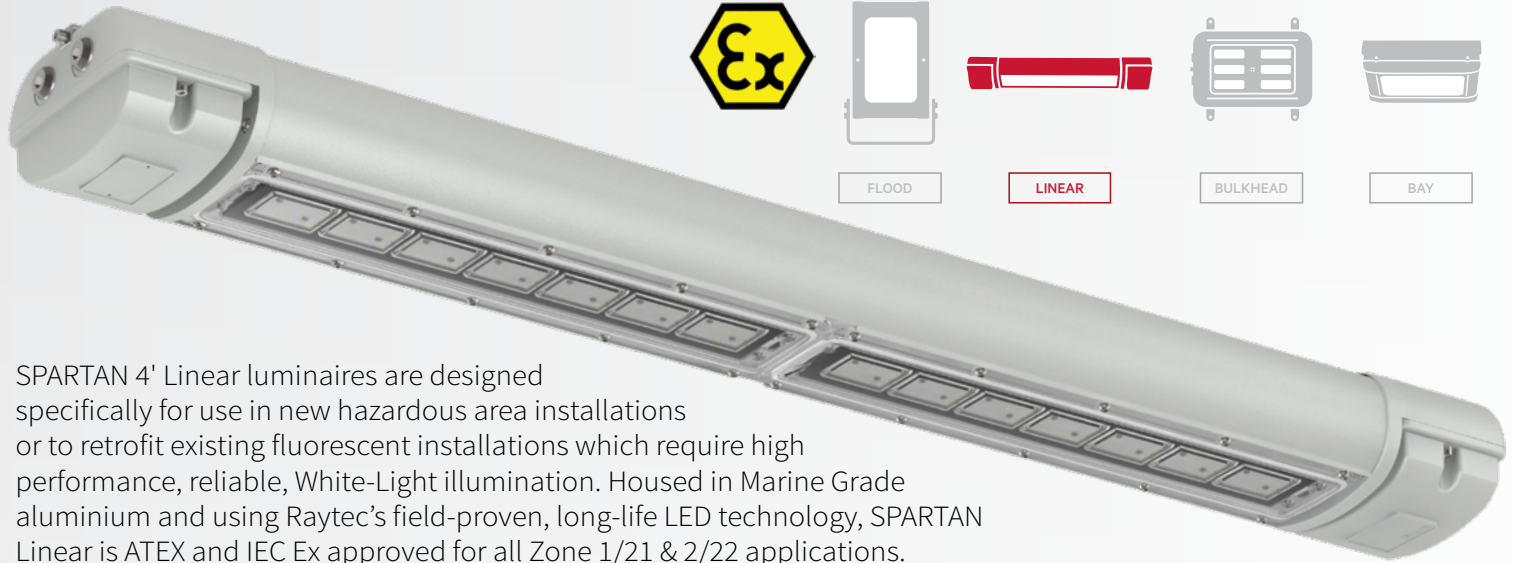


KP162050

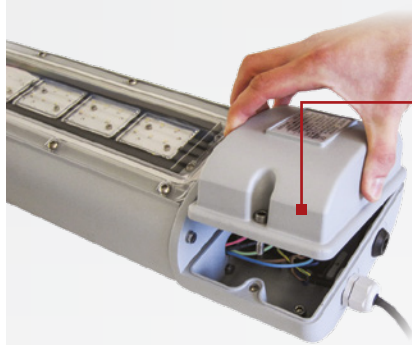
Cat No.	Blade Length (mm)	Full Length (mm)	Weight (g)
KP9505155	43 (30 EXCL. CABLE SHEAR)	155	110
KP162050	80	120	85
KP9852	50	190	67
KP9854	50	190	68
KP9855	38	180	68



SPARTAN LINEAR ZONE 1 & 2 HAZARDOUS AREA



SPARTAN 4' Linear luminaires are designed specifically for use in new hazardous area installations or to retrofit existing fluorescent installations which require high performance, reliable, White-Light illumination. Housed in Marine Grade aluminium and using Raytec's field-proven, long-life LED technology, SPARTAN Linear is ATEX and IEC Ex approved for all Zone 1/21 & 2/22 applications.



Easy Maintenance

Modular design allows quick and easy servicing and inspection of all key components including LED and PSU modules. SPARTAN Linear has also been designed without ledges to prevent dust or water from accumulating.



SPX-WL168

Zone 1/21*

\$1469.00
+ GST



SPX-WL168-EMX25

Zone 1/21 Emergency

\$2469.00
+ GST



SPZ-WL168

Zone 2/22*

\$1115.00
+ GST

Features

Benefits

Retrofitable	Easy Installation, matching the dimensions of traditional 2x36W fluorescent fittings, to provide an easy direct replacement
Intelligent Emergency	Self-testing emergency battery proactively monitors & maintains the overall health of the luminaire Easy inspection thanks to a tri-colour LED indicator
Modular Design	Both the LED & PSU modules are easily accessible for maintenance and inspection
Ultra-Reliable	Industry leading 5 year warranty Designed & manufactured in the UK to the highest standards including both ISO9001 & ISO14001 Intelligent emergency with automatic self-testing

*Also available as a Single Entry

SPX-WL168-LL

Zone 1/21 Single Entry

\$1115.00 + GST

SPZ-WL168-LL

Zone 2/22 Single Entry

\$939.00 + GST



rayTEC

Ph 0800 442 182
+64 9 274 3340

sales@transnet.co.nz

www.transnet.co.nz



A waterproof, stylish, and approved shore power connection system for your boat

Ratio Electric's Shore Power connection system is the marine standard all over Europe. They have designed the MP16 (16A/250V), MP32 (32A/250V) and MP50 (50A/250V) system to offer a waterproof, stylish and approved shore power connection system for your boat. Every marine product is designed to be user-friendly and still able to withstand the rigours of life at sea.

FEATURES

- Based on world standard for outdoor connections (IEC 60309)
- Boat inlet with mating connector (moulded or assembled)
- Complies with AS/NZS 3004.2014

STAINLESS STEEL INLET

- Solid Cast Marine Grade 316 Stainless Steel
- Includes an easy locking waterproof cap
- IP56 rated



POLYDAMIDE INLET

- Glass filled PA6
- Includes an easy locking waterproof cap
- IP56 rated



Note: The requirements for installation of electrical systems on craft of hull length up to 24m are specified in the ISO 13297 standard. MP16, MP32 and MP50 inlet will not accept standard CEE couplers.

CABLE CONNECTORS

- Available in a moulded watertight version up to 32A
- Assembly (rewireable) version available up to 50A
- Includes a weatherproof sealing cap to ensure CE compliance

IP56 INLET CONNECTOR

- LED power indication
- Watertight moulded construction
- 16A and 32A version



IP67 PLUG

- Weatherproof marine construction
- Easy assembly
- 16A, 32A, and 50A version



RSP16AKITSS



RSP16AKITECO

SHORE POWER 16A KITS

RSP16AKITECO **\$345.82 + GST**

16A Economy kit with white polyamide IP56 inlet, 10m 1.5mm² IP67 lead, & carry bag

RSP16AKITSS **\$389.37 + GST**

16A kit with 316 Stainless Steel IP56 inlet, 10m 1.5mm² IP67 lead, & carry bag

Ratio
ELECTRIC

MERRY CHRISTMAS!

From everyone here at TransNet we'd like to wish you and your family a happy and safe summer holiday.

Don't forget that although we never close courier companies reduce their runs over the break, so order early to ensure prompt delivery. We won't be in the office on the stats, but you can still call us on 0800 442 182 for assistance.

Don't forget the sunscreen, and we'll see you again in 2020!

The Team at TransNet



TransNet New Zealand Ltd

Auckland

78 Cryers Road
East Tamaki
Auckland
NEW ZEALAND
Ph 0800 442 182
Fax 0800 442 183
PO Box 39 383
Howick, Auckland

Wellington

10 Petone Ave
Petone
Wellington
NEW ZEALAND
Ph 04 576 2530
Fax 04 576 0040
PO Box 39 383
Howick, Auckland

NEW ZEALAND

sales@transnet.co.nz

TransNet Tonga

Nuku'alofa

Lakalakaimonu Multi Utility
Complex
Taufa'ahau Road
Poutaha
Nuku'alofa
TONGA
Ph +67 627 939
Fax +67 627 976
PO Box 2932
Nuku'alofa

TONGA

transnet@kalianet.to

MULTI-COMPARTMENT TOOLBOXES

These handy toolboxes are easy to carry with a solid handle and carry strap, and feature removable compartments.

Replacement boxes in three sizes are available if you need to reconfigure your toolbox storage sizes.

BOX-A
95x65x65mm



BOX-B
140x65x65mm



BOX-C
290x65x65mm



BOX399

BOX366

Cat No.	Description
BOX366	TOOLBOX 12 COMPARTMENT - 6 x A-TYPE, 4 x B-TYPE, 2 x C-TYPE
BOX399	TOOLBOX 18 COMPARTMENT - 18 x A-TYPE
BOX-A	REPLACEMENT BOX W/PARTITION 95x65x65MM
BOX-B	REPLACEMENT BOX W/PARTITION 140x65x65MM
BOX-C	REPLACEMENT BOX W/PARTITION 290x65x65MM

TransNet NZ Ltd has made every reasonable effort to ensure the accuracy of this information and it is to the best of our knowledge correct and reliable. Under no circumstances does this constitute an assurance of any particular quality or performance and users should independently evaluate the suitability of products for their desired application. All information in this publication including pricing, drawings, illustrations, images and graphic designs are reflections of our current understanding. TransNet NZ Ltd reserves the right to make any adjustment to this information at any time. Our liability for the products outlined in this publication is set forth in our standard terms and conditions of trade. In case of any potential ambiguities or questions, please contact us for clarification.

